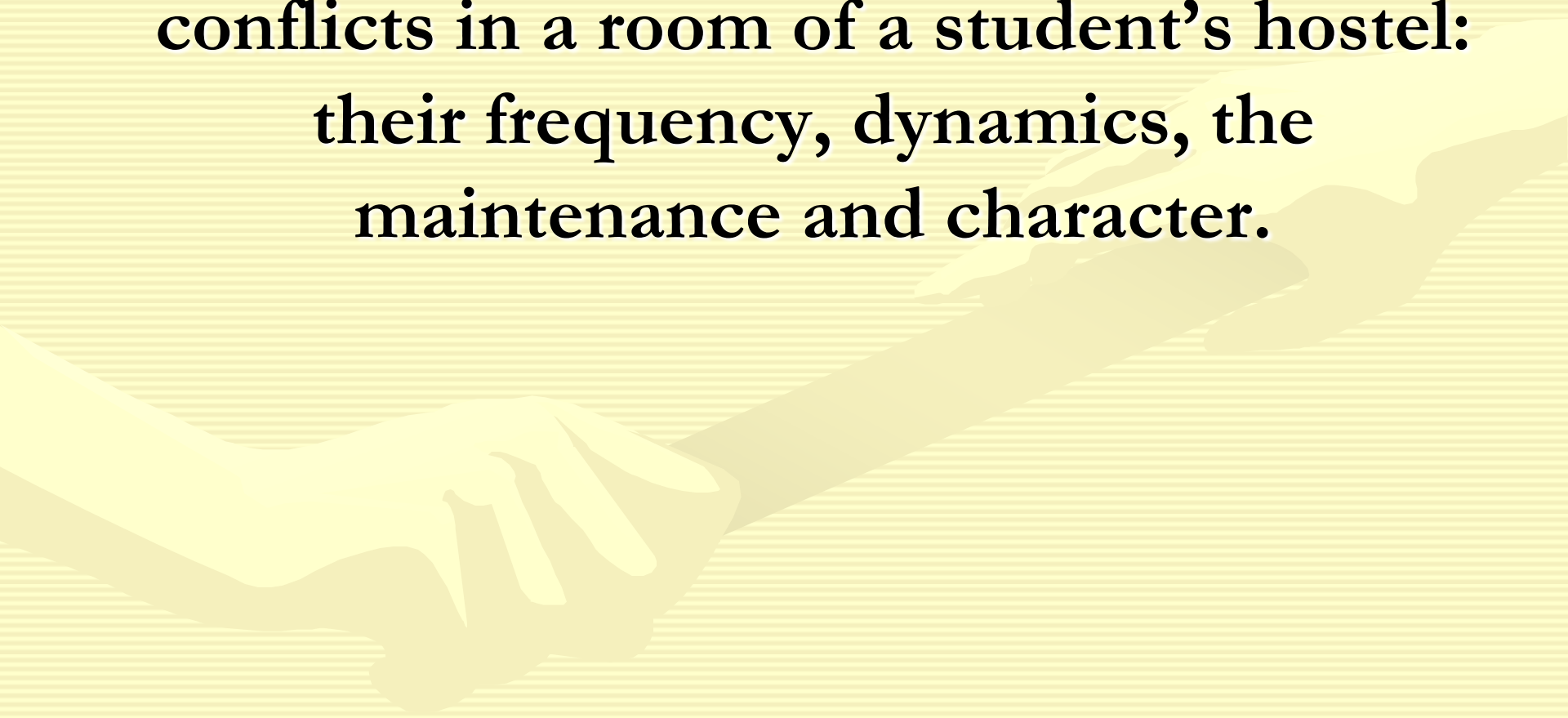


The psychological analysis of conflicts between neighbours in a student's hostel

Pogodina Elena

University "Dubna"

The aim of my PhD project is to study conflicts in a room of a student's hostel: their frequency, dynamics, the maintenance and character.

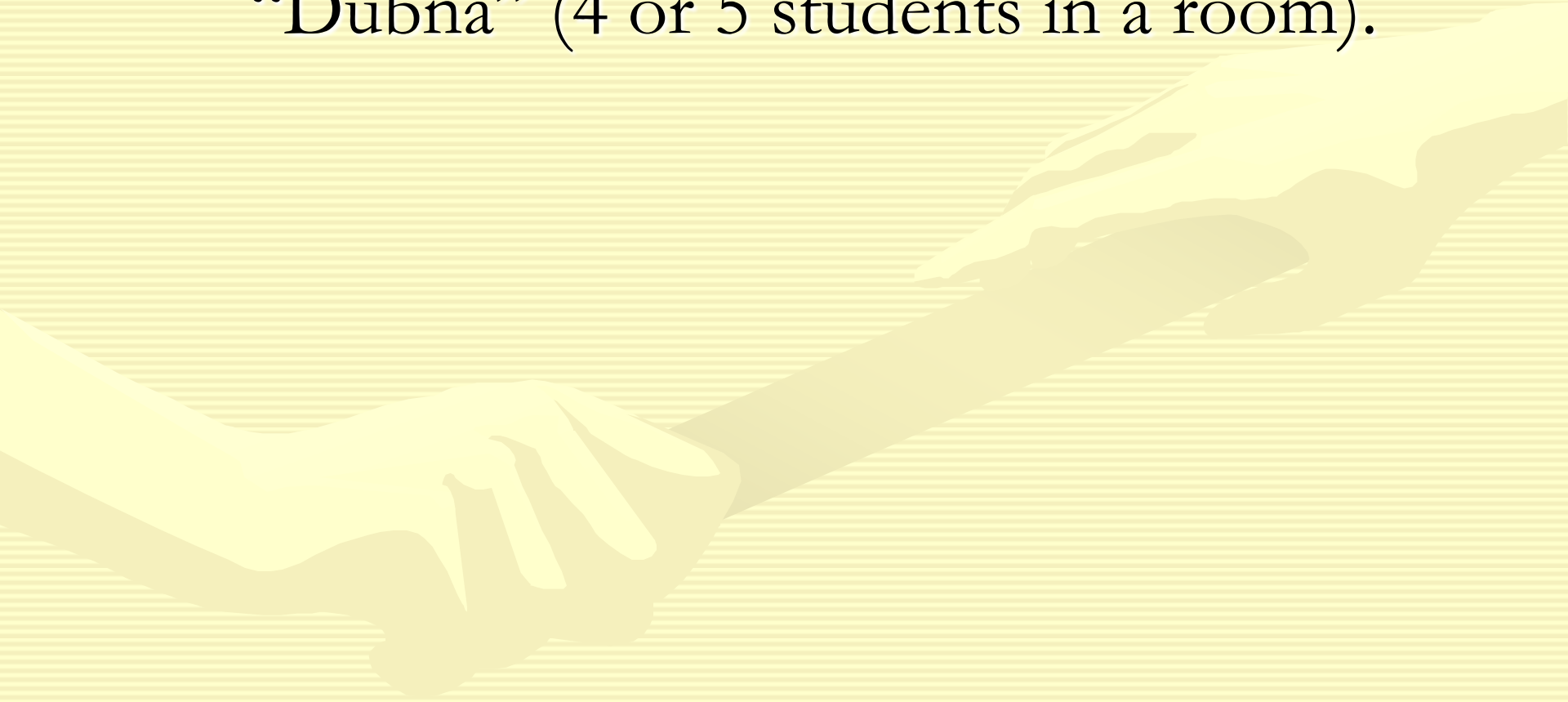


In our dissertation we plan:

- 1. Using retrospective self-reports of students, to reveal presence and frequency of serious and frivolous conflicts at students of the various courses living in a hostel.
- 2. To establish the reasons of serious and frivolous conflicts of conflicts at students of the various courses living in a hostel.
- 3. To define dynamics of conflicts during the adaptable period and after its termination (on sample of students of 1 course installed in a hostel).
- 4. To define personal features of students living in a hostel room.
- 5. To check up interrelation presence between frequency of conflicts and personal qualities living in a hostel room.
- 6. To check up interrelation presence between frequency of conflicts and similarity/distinctions in personal qualities of neighbours in a room.
- 7. To compare frequencies of conflicts at the first-year students living in a hostel which were concluding the contract and not concluding the contract.

The participants of our research are

students living in 4 hostels of university
“Dubna” (4 or 5 students in a room).



The example of the filled monthly calendar

Календарь конфликтов

	понедельник	вторник	среда	четверг	пятница	суббота	воскресенье
сентябрь	@ ² 1	2	~ ³ 3	4	5	6	7
	8	9	10	11	● ¹ 12	13	14
	15	→ ¹ 16	17	18	19	20	~ ² 21
	22	23	24	■ ² 25	26	27	28
	~ ³ 29	~ ³ 30					

Сила конфликта оценивается по трехбалльной шкале:

- 1 – слабый;
- 2 – средний;
- 3 – сильный.

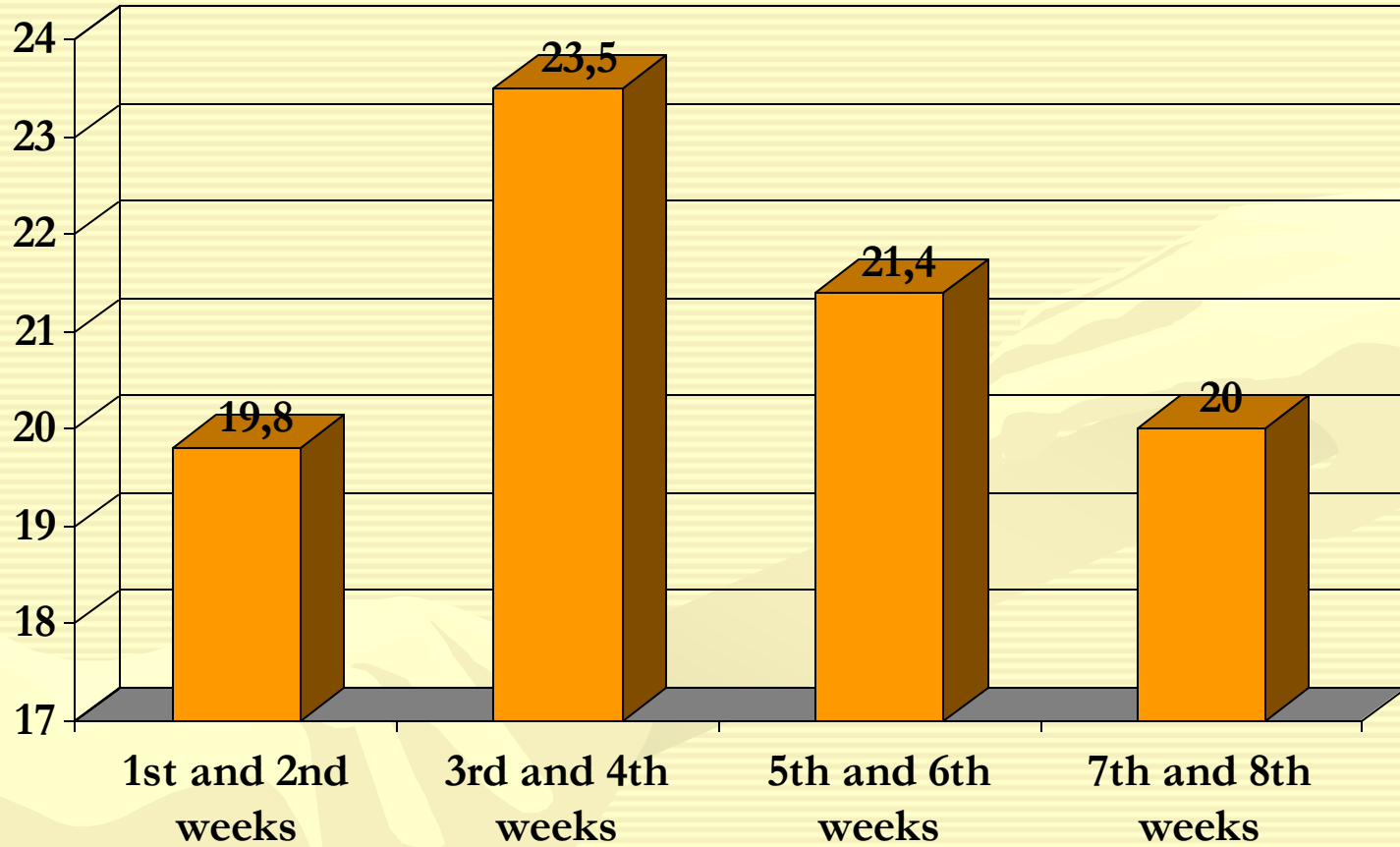
Причины конфликта обозначаются следующими символами:

- - личные особенности оппонента;
- - манера поведения оппонента;
- ↗ - бытовые проблемы (уборка и т.д.);
- ◆ - проблемы, затрагивающие режим дня;
- × - проблемы из-за пользования чужой вещью;
- @ - несоблюдение пунктов контракта (указать, каких).

Some descriptive statistics

Time periods	min	max	average conflictness
1 st week	1	14	8,4
2 nd week	3	24	11,4
3 rd week	4	28	11,5
4 th week	2	22	12,0
5 th week	2	20	11,6
6 th week	1	19	9,7
7 th week	2	18	9,7
8 th week	2	18	10,3
1 st -2 nd weeks	11	38	19,8
3 rd -4 th weeks	7	50	23,5
5 th -6 th weeks	4	37	21,4
7 th -8 th weeks	7	31	20,0
1 st -8 th weeks	33	113	84,6

Average conflictness for every two weeks



Thank you for attention!

